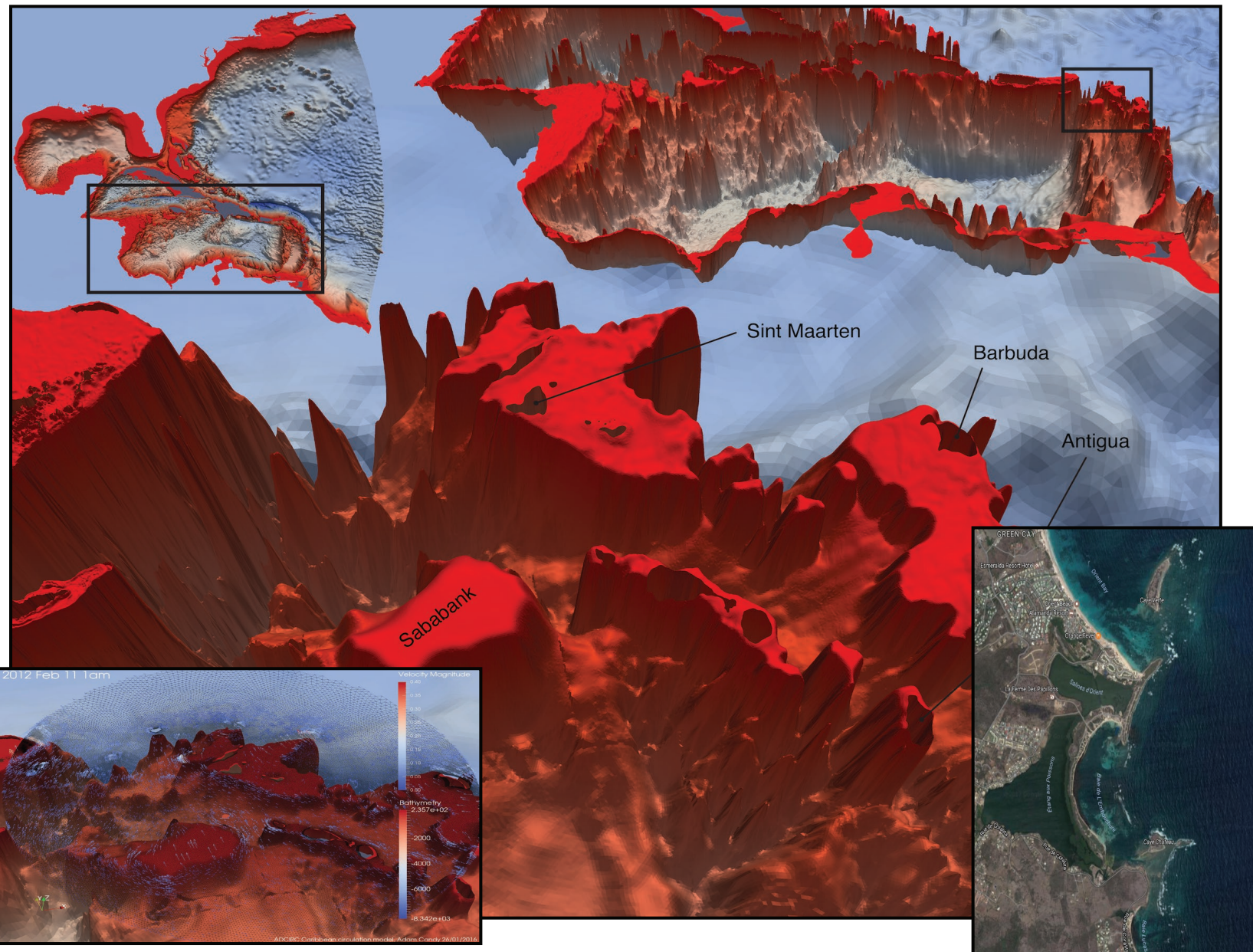



SCENES: Multi-scale modelling of the Caribbean Sea, from global-scale inputs down to complex 'fractal-like' bays and inlets.

MSc project: Hydrodynamic → Biogeomorphic model for shallow bays in tropical islands



Funded project,
collaboration with **Deltares**
Enabling Delta Life 

Delft3D / D-Flow model

Impact of possible future sea level rise,
erosion, changing shape of bays

Join observations expedition
in Sint Maarten (possibility)

- Application of theory
- Navier-Stokes based hydrodynamics
- Morphology, biology driven
- High Performance Computing



MSc projects: data and modelling of Caribbean Sea

- come chat to us!



Dr Adam Candy (a.s.candy@tudelft.nl, Room 2.87)
Prof. Julie Pietrzak (j.d.pietrzak@tudelft.nl)